



Consolidated Minerals (Consmine) aims to be the most efficient and market-focused supplier of manganese ore, and to be strategically positioned in other steel-making commodities. The company undertakes focused exploration programmes and will continue to grow through selective investments and acquisitions.

## Ghana

Consmine, through its wholly owned subsidiaries, owns 90% of Ghana Manganese Company Limited (GMC). The remaining 10% is owned by the government of Ghana.

GMC owns and operates the Nsuta manganese mine in the western region of Ghana. GMC holds a mining concession for manganese over an area of 175 square kilometres in and around Nsuta in the western region of Ghana, less than 3% of which has been mined to date.

The mine operates in a corridor of around 4.6km<sup>2</sup> on a concession over 175 km<sup>2</sup>. It is located close to the major port of Takoradi, which is approximately 63km by rail or 95km by road. At Takoradi, GMC owns and operates its own ship loading infrastructure.

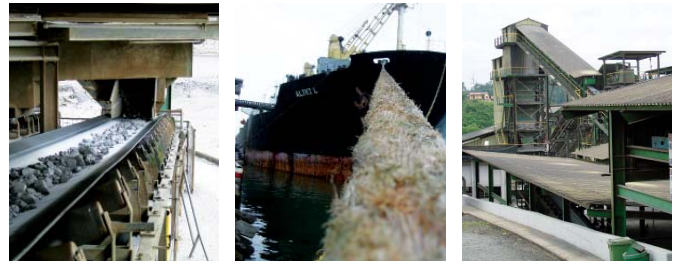
GMC manganese is a very clean, high-quality manganese carbonate ore. GMC ore is one of the highest manganese-to-iron ratio ores in the market (Mn:Fe ~31) and is low in phosphorous, alumina and other heavy metal impurities, making it well-suited for both alloy and manganese metal production. Production in 2010 was 1.5Mt @ 28% Mn.

### RESERVES AND RESOURCES: CARBONATE\*

Category	Mt	Mn%
Total Reserves	19.6	28.0
Total Resources	37.4	27.9

\*As at 1 July 2010





Consolidated Minerals (Consmín) sells its manganese carbonate ore from Ghana exclusively through its wholly owned subsidiary, Manganese Trading Limited (MTL), which is headquartered in Jersey, Channel Islands, in the United Kingdom.

### Ghana Manganese Carbonate Ore Product Specifications

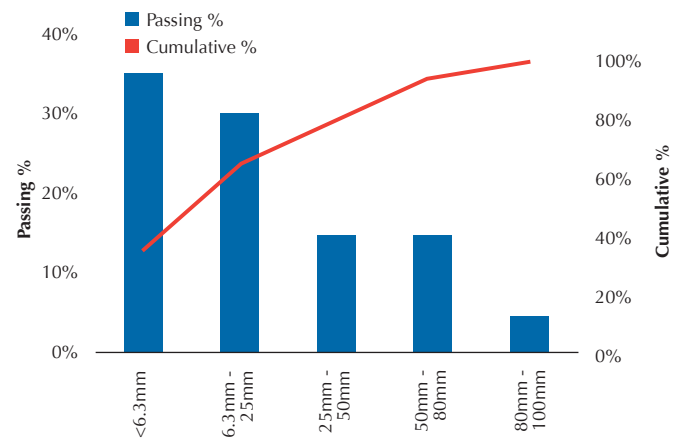
	GUARANTEE		TYPICAL
Mn	28%	Min	29%
Fe	2%	Max	1%
SiO <sub>2</sub>	16%	Max	14%
Al <sub>2</sub> O <sub>3</sub>	3.5%	Max	2.2%
P	0.08%	Max	0.06%
CaO	7%	Max	6%
MgO	6.5%	Max	4.7%

MINIMUM SIZING GUARANTEE ON LOADING AT TAKORADI	
Lump	6.3 – 100mm 65%
Fines	0 – 25mm 80%

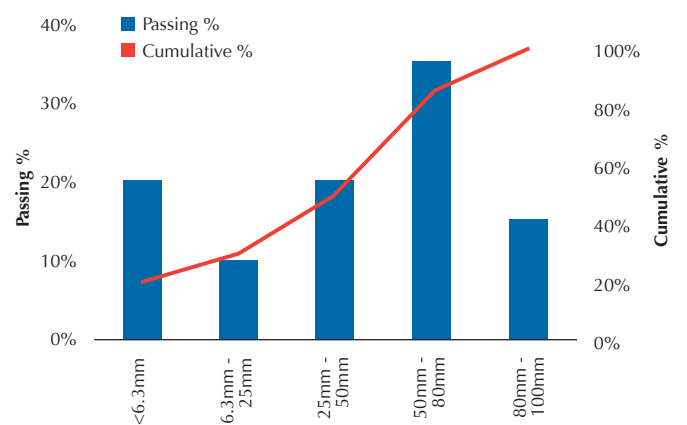
TYPICAL MOISTURE ON LOADING AT TAKORADI	
Lump	1%
Fines	2%

MINOR TRACE ELEMENTS (INDICATIVE - PPM)			
As	240	Ni	350
B	45	Pb	7
Co	65	S	100
Cr	35	Sr	160
Cu	30	Ti	450
K	1500	V	240
Mo	160	Zn	160

### Typical Screen Analysis – Lump



### Typical Screen Analysis – Fines



### Contact information

For further information and sales enquiries, please contact Consolidated Minerals marketing department:  
 Tel +44 1534 513 300  
 Fax +44 1534 513 333  
 marketing@consmín.com  
 www.consmín.com

